

# Dossier

2018

Largo da Graça 82-Vila Sousa 3 2ºandar 1170-165 Lisbon PORTUGAL  
[www.cvmj-arch.com](http://www.cvmj-arch.com) | +351 214 088 446 | [info@cvmj.pt](mailto:info@cvmj.pt)



“Partners in Creating Spaces  
that Enhance Unique Experiences”

**CVMJ is a creative company that provides  
innovative solutions, technical capability and global  
project management.**

## Services

We offer flexibility and a capacity for constant adaptation that allows us to present tailored solutions, responding in a personalised way to the needs of each project and client.

The high degree of reliability in the implementation of each project makes us the preferred trusted partners of our clients.

We attend to the needs of corporate clients throughout the project chain, including architecture and engineering, with a particular specialization in retail design.

# Services

## Architecture

Feasibility studies & technical due diligence. Building surveys. Space planning. Layout studies.  
Lead consultancy & statutory approvals. Construction drawings. Bills of quantities & specifications.  
Production information. Corporate design guidelines. Licensing and certification procedures.

## Project Management

Site assessment. Landlord negotiations. Programme management. Retail & Space planning.  
Engineering coordination. Independent advisor. Principal designer. Budget definition.  
Technical reporting. Implementation of corporate design guidelines.

## Construction Management

Tenders for suppliers. Planning control. On site technical assistance. Budget control. Technical reporting.

## Facility Management

Maintenance programme management. Maintenance budget management.

# Retail

Selected works

2018

Largo da Graça 82-Vila Sousa 3 2ºandar 1170-165 Lisbon PORTUGAL



## Adidas

### On the way to Stadium

Since 2015 we have provided technical support to the **Adidas** design team in the opening of new stores. From the recovery of a building in the heart of Lisbon Baixa, to the iconic store in the Glories shopping centre in Barcelona, more than 30 projects in shopping centres and in urban context have been produced and managed by our team of professionals.

*We have supported the evolution of Adidas image through the different concepts of the brand*



## Adidas

### Adidas Benfica Stadium, Lisbon 2017

Complete remodelling of the Adidas official store in the Benfica Stadium.

A curved and dynamic space that enhances the overall vision and integrates the different lines of the brand: Athletics, Originals and Stella McCartney.

**Architecture:** Layout studies. Construction drawings.

**Construction Management:** Engineering coordination. Implementation of corporate design guidelines. Programme management. Technical assistance on site. Technical reporting.



## Adidas

### More Adidas stores in Portugal

<b>Leiria Shopping</b>	342m <sup>2</sup>	Leiria
<b>Dolce Vita tejo</b>	407m <sup>2</sup>	Sintra
<b>Parque Nascente</b>	295m <sup>2</sup>	Rio tinto
<b>Espaço Guimarães</b>	447m <sup>2</sup>	Guimarães
<b>Braga Parque</b>	259m <sup>2</sup>	Braga

**Architecture:** Layout studies. Lead consultancy & Statutory approvals. Construction drawings. Production information. Licensing and certification procedures.

**Project and Construction Management:** Engineering coordination. Implementation of corporate design guidelines. Programme management. Tenders for suppliers. Technical assistance on site. Technical reporting.



## Adidas

### More Adidas stores in Portugal

<b>Rua Santa Catarina, Porto</b>	450m <sup>2</sup>	Porto
<b>Mar Shopping</b>	289m <sup>2</sup>	Matosinhos
<b>CascaShopping</b>	292m <sup>2</sup>	Cascais
<b>Colombo Shopping</b>	352m <sup>2</sup>	Lisboa
<b>Rua Augusta, Lisbon</b>	570m <sup>2</sup>	Lisboa

**Architecture:** Layout studies. Lead consultancy & Statutory approvals. Construction drawings. Production information. Licensing and certification procedures.

**Project and Construction Management:** Engineering coordination. Implementation of corporate design guidelines. Programme management. Tenders for suppliers. Technical assistance on site. Technical reporting.



## Adidas

### Adidas Augusta street, Lisbon 2015

The first Adidas store in the centre of Lisbon is located since 2015 in an old building on Augusta Street. Our project team was responsible for the exterior recovery and the detailed design of the interior to adapt the historic structure in a dynamic space that fulfilled all the requirements of the brand.

**Architecture:** Layout studies. Lead consultancy & Statutory approvals. Construction drawings. Production information. Licensing and certification procedures.

**Project and Construction Management:** Engineering coordination. Implementation of corporate design guidelines. Programme management. Tenders for suppliers. Technical assistance on site. Technical reporting.



## Adidas

### Adidas Tetuán Street, Sevilla 2017

The **CVMJ** architecture team were responsible for the efficient transformation of an old patio-house in the historic center of Seville into the new Adidas store.

**Architecture:** Space planning. Layout studies. Construction drawings.

**Construction Management:** Implementation of corporate design guidelines. Programme management. Technical assistance on site. Technical reporting.



## Adidas

### More Adidas stores in Spain

<b>Gran Via 2</b>	281m <sup>2</sup>	Barcelona
<b>Maremagnum</b>	350m <sup>2</sup>	Barcelona
<b>Miramar</b>	371m <sup>2</sup>	Fuengirola
<b>El Saler</b>	432m <sup>2</sup>	Valencia
<b>Plenilunio</b>	376m <sup>2</sup>	Madrid
<b>Parque Nevada</b>	306m <sup>2</sup>	Granada
<b>Les Glòries</b>	628m <sup>2</sup>	Barcelona

**Architecture:** Space planning. Layout studies. Construction drawings.

**Construction Management:** Implementation of corporate design guidelines. Programme management. Technical assistance on site. Technical reporting.



## Adidas

### More Adidas stores in Spain

<b>Fan Mallorca</b>	285m <sup>2</sup>	Mallorca
<b>Splau</b>	218m <sup>2</sup>	Barcelona
<b>La Vaguada</b>	385m <sup>2</sup>	Madrid
<b>Calle Recogidas</b>	459m <sup>2</sup>	Granada
<b>Puerto Venecia</b>	337m <sup>2</sup>	Zaragoza
<b>Valle Real*</b>	347m <sup>2</sup>	Santander
<b>Max Center*</b>	252m <sup>2</sup>	Bilbao

**Architecture:** Space planning. Layout studies. Construction drawings.

**Construction Management:** Implementation of corporate design guidelines. Programme management. Technical assistance on site. Technical reporting.

\*Full project and construction management.



## Adidas

### Adidas stores in France

<b>Euralille</b>	296m <sup>2</sup>	Lille
<b>Cap 3000</b>	357m <sup>2</sup>	Nice

**Architecture:** Layout studies. Lead consultancy & Statutory approvals. Construction drawings. Production information. Licensing and certification procedures.

**Project and Construction Management:** Engineering coordination. Implementation of corporate design guidelines. Programme management. Tenders for suppliers. Technical assistance on site. Technical reporting.



## Adidas Originals

### Development of the innovative Adidas Originals concept

With a presence in the main capitals, **Adidas Originals** opens a store in Lisbon. The aim of the Originals concept is to transmit the legacy, competence and authenticity of the Adidas brand and to evolve through contact with consumers.

*The Originals stores take their inspiration from the urban neighbourhood, combined with the brand's strong DNA.*



## Adidas Originals

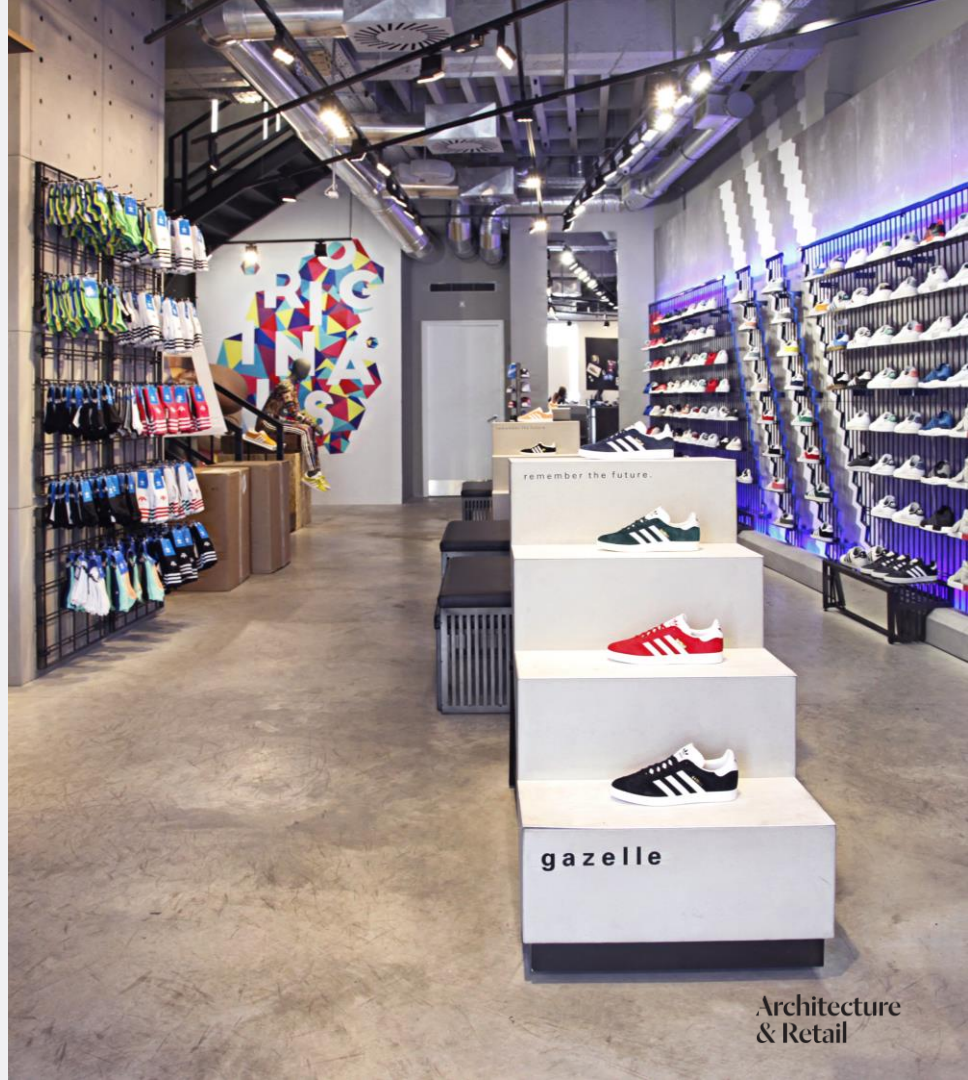
### Adidas Originals Restauradores, Lisbon 2016

**CVMJ** was in charge of the Architecture support services, full Project and construction management of the Adidas Originals store in Lisbon.

The intervention integrates the constructive elements characteristic of the Pombalino building with the consistent image of a brand of long trajectory and strong identity.

**Architecture:** Feasibility studies & Technical due diligence. Building survey. Layout studies. Lead consultancy & Statutory approvals. Construction drawings. Production information. Licensing and certification procedures.

**Project and Construction Management:** Engineering coordination. Implementation of corporate design guidelines. Programme management. Tenders for suppliers. Technical assistance on site. Technical reporting.



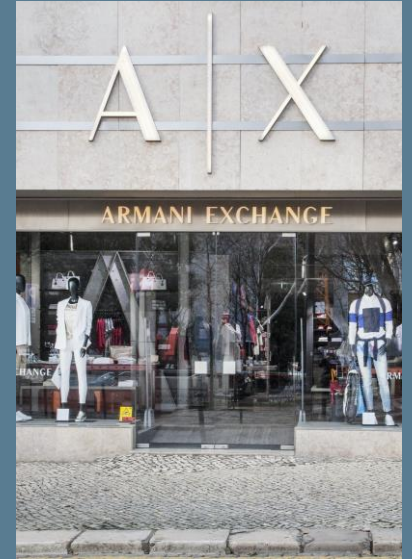
## Armani Exchange

### New Armani Exchange concept in Western Europe

**Armani** introduces its youngest brand in Europe after consolidation in Asia and America.

The new concept of the brand combines standardised elements, neutral tones and strong colours of industrial inspiration to create dynamic and sophisticated environments.

*After the openings in 2016 in Lisbon and Oporto CVMJ have managed the opening of seven new stores in Spain and France.*



## Armani Exchange

### Armani Exchange Avenida da Liberdade, Lisbon 2016

Lisbon was the place chosen for the first opening in Portugal, a store of more than 250 square metres on the main street for the luxury brands.

**Architecture:** Feasibility studies & Technical due diligence. Building survey. Layout studies. Lead consultancy & Statutory approvals. Construction drawings. Production information. Licensing and certification procedures.

**Project and Construction Management:** Engineering coordination. Implementation of corporate design guidelines. Programme management. Tenders for suppliers. Technical assistance on site. Technical reporting.



## Armani Exchange

### Armani Exchange Rua Sta. Catarina, Porto 2016

After Lisbon, the Porto store was inaugurated, a commercial space of 300 square metres and a loft environment with sky skylights.

The shops of Lisbon and Oporto have served as prototypes of the new image of the brand present today in stores and corners around the world.

**Architecture:** Technical due diligence. Building survey. Layout studies. Lead consultancy & Statutory approvals. Construction drawings. Production information. Licensing and certification procedures.

**Project and Construction Management:** Engineering coordination. Implementation of corporate design guidelines. Programme management. Tenders for suppliers. Technical assistance on site. Technical reporting.



## Armani Exchange

### Armani Exchange stores in France

<b>Cap 3000</b>	186m <sup>2</sup>	Nice
<b>Rosny 2</b>	258m <sup>2</sup>	Les Chesnay
<b>Carré Sénart</b>	256m <sup>2</sup>	Lieusaint
<b>Parly2</b>	247m <sup>2</sup>	Le Chesnay
<b>Les 4 Temps</b>	264m <sup>2</sup>	Paris, La Défense

**Architecture:** Technical due diligence. Building survey. Layout studies. Lead consultancy & Statutory approvals. Construction drawings. Production information. Licensing and certification procedures.

**Project and Construction Management:** Engineering coordination. Implementation of corporate design guidelines. Programme management. Tenders for suppliers. Technical assistance on site. Technical reporting.



## Armani Exchange

### Armani Exchange stores in France

<b>Cap 3000</b>	186m <sup>2</sup>	Nice
<b>Rosny 2</b>	258m <sup>2</sup>	Les Chesnay
<b>Carré Sénart</b>	256m <sup>2</sup>	Lieusaint
<b>Parly2</b>	247m <sup>2</sup>	Le Chesnay
<b>Les 4 Temps</b>	264m <sup>2</sup>	Paris, La Défense

**Architecture:** Technical due diligence. Building survey. Layout studies. Lead consultancy & Statutory approvals. Construction drawings. Production information. Licensing and certification procedures.

**Project and Construction Management:** Engineering coordination. Implementation of corporate design guidelines. Programme management. Tenders for suppliers. Technical assistance on site. Technical reporting.



## Armani Exchange

### Armani Exchange stores in France

<b>Cap 3000</b>	186m <sup>2</sup>	Nice
<b>Rosny 2</b>	258m <sup>2</sup>	Les Chesnay
<b>Carré Sénart</b>	256m <sup>2</sup>	Lieusaint
<b>Parly2</b>	247m <sup>2</sup>	Le Chesnay
<b>Les 4 Temps</b>	264m <sup>2</sup>	Paris, La Défense

**Architecture:** Technical due diligence. Building survey. Layout studies. Lead consultancy & Statutory approvals. Construction drawings. Production information. Licensing and certification procedures.

**Project and Construction Management:** Engineering coordination. Implementation of corporate design guidelines. Programme management. Tenders for suppliers. Technical assistance on site. Technical reporting.



## Armani Exchange

### Armani Exchange stores in Spain

<b>Plaza Rio 2</b>	320m <sup>2</sup>	Madrid
<b>Les Glòries</b>	650m <sup>2</sup>	Barcelona

**Architecture:** Feasibility studies & Technical due diligence. Building survey. Layout studies. Lead consultancy & Statutory approvals. Construction drawings. Production information. Licensing and certification procedures.

**Project and Construction Management:** Engineering coordination. Implementation of corporate design guidelines. Programme management. Tenders for suppliers. Technical assistance on site. Technical reporting.



## Armani Exchange

### Armani Exchange stores in Spain

<b>Plaza Rio 2</b>	320m <sup>2</sup>	Madrid
<b>Les Glòries</b>	650m <sup>2</sup>	Barcelona

**Architecture:** Feasibility studies & Technical due diligence. Building survey. Layout studies. Lead consultancy & Statutory approvals. Construction drawings. Production information. Licensing and certification procedures.

**Project and Construction Management:** Engineering coordination. Implementation of corporate design guidelines. Programme management. Tenders for suppliers. Technical assistance on site. Technical reporting.



## Max Mara fashion group

### MMFG: Max Mara group new stores

**CVMJ** is proud to be providing full Project Management and Architectural support services for three new store in Puerto Banús, Palma de Mallorca and Cascais.

**Architecture:** Lead consultancy & Statutory approvals. Construction drawings. Production information. Licensing and certification procedures.

**Project and Construction Management:** Engineering coordination. Implementation of corporate design guidelines. Programme management. Tenders for suppliers. Technical assistance on site. Technical reporting.



*Timeless and elegant, the new Max Mara stores perfectly reflects the essence of the brand.*



## Max Mara fashion group

### MMFG stores in Spain and Portugal

<b>Max Mara</b>	228m <sup>2</sup>	Puerto Banús (ES)
<b>Max&amp;Co</b>	146m <sup>2</sup>	Palma de Mallorca (ES)
<b>Max&amp;Co CascaiShopping</b>	150m <sup>2</sup>	Cascais (PT)

**Architecture:** Lead consultancy & Statutory approvals. Construction drawings. Production information. Licensing and certification procedures.

**Project and Construction Management:** Engineering coordination. Implementation of corporate design guidelines. Programme management. Tenders for suppliers. Technical assistance on site. Technical reporting.



## Max Mara fashion group

### MMFG stores in Spain and Portugal

<b>Max Mara</b>	228m <sup>2</sup>	Puerto Banús (ES)
<b>Max&amp;Co</b>	146m <sup>2</sup>	Palma de Mallorca (ES)
<b>Max&amp;Co CascaiShopping</b>	150m <sup>2</sup>	Cascais (PT)

**Architecture:** Lead consultancy & Statutory approvals. Construction drawings. Production information. Licensing and certification procedures.

**Project and Construction Management:** Engineering coordination. Implementation of corporate design guidelines. Programme management. Tenders for suppliers. Technical assistance on site. Technical reporting.



## Max Mara fashion group

### MMFG stores in Spain and Portugal

<b>Max Mara</b>	228m <sup>2</sup>	Puerto Banús (ES)
<b>Max&amp;Co</b>	146m <sup>2</sup>	Palma de Mallorca (ES)
<b>Max&amp;Co CascaiShopping</b>	150m <sup>2</sup>	Cascais (PT)

**Architecture:** Lead consultancy & Statutory approvals. Construction drawings. Production information. Licensing and certification procedures.

**Project and Construction Management:** Engineering coordination. Implementation of corporate design guidelines. Programme management. Tenders for suppliers. Technical assistance on site. Technical reporting.



## OVS

### New stores for the largest italian clothing retailer

Our architecture and project management teams committed to the Italian fashion chain, **OVS**, to oversee the completion and opening of a series of new stores in Portugal and France as part of their expansion development.

Architecture & design support services  
Full project and construction management



## OVS

### OVS stores in Portugal and France

<b>Almada Forum</b>	887m <sup>2</sup>	Almada (PT)
<b>Sintra Forum</b>	835m <sup>2</sup>	Sintra (PT)
<b>Mar Shopping</b>	835m <sup>2</sup>	Loulé (FR)
<b>Chambourcy</b>	1.198m <sup>2</sup>	Chambourcy (FR)
<b>Carré Sénart</b>	1.175m <sup>2</sup>	Lieusaint (FR)

**Architecture:** Technical due diligence. Building survey. Layout studies. Lead consultancy & Statutory approvals. Construction drawings. Production information. Licensing and certification procedures.

**Project and Construction Management:** Engineering coordination. Implementation of corporate design guidelines. Programme management. Tenders for suppliers. Technical assistance on site. Technical reporting.



## OVS

### OVS stores in Portugal and France

<b>Almada Forum</b>	887m <sup>2</sup>	Almada (PT)
<b>Sintra Forum</b>	835m <sup>2</sup>	Sintra (PT)
<b>Mar Shopping</b>	835m <sup>2</sup>	Loulé (FR)
<b>Chambourcy</b>	1.198m <sup>2</sup>	Chambourcy (FR)
<b>Carré Sénart</b>	1.175m <sup>2</sup>	Lieusaint (FR)

**Architecture:** Technical due diligence. Building survey. Layout studies. Lead consultancy & Statutory approvals. Construction drawings. Production information. Licensing and certification procedures.

**Project and Construction Management:** Engineering coordination. Implementation of corporate design guidelines. Programme management. Tenders for suppliers. Technical assistance on site. Technical reporting.



## OVS

### OVS stores in Portugal and France

<b>Almada Forum</b>	887m <sup>2</sup>	Almada (PT)
<b>Sintra Forum</b>	835m <sup>2</sup>	Sintra (PT)
<b>Mar Shopping</b>	835m <sup>2</sup>	Loulé (FR)
<b>Chambourcy</b>	1.198m <sup>2</sup>	Chambourcy (FR)
<b>Carré Sénart</b>	1.175m <sup>2</sup>	Lieusaint (FR)

**Architecture:** Technical due diligence. Building survey. Layout studies. Lead consultancy & Statutory approvals. Construction drawings. Production information. Licensing and certification procedures.

**Project and Construction Management:** Engineering coordination. Implementation of corporate design guidelines. Programme management. Tenders for suppliers. Technical assistance on site. Technical reporting.



## Other Brands

### Services for other fashion retailers

<b>Purificación García</b>	179m <sup>2</sup>	Loulé (Pt)
<b>Vans Freeport</b>	201m <sup>2</sup>	Alcochete (Pt)
<b>Bimba y Lola Freeport</b>	150m <sup>2</sup>	Alcochete(Pt)
<b>Bimba y Lola Amoreiras Sh</b>	68m <sup>2</sup>	Lisboa (Pt)

Architecture support services.

\*Retail & Space planning

Construction management support.



PG

PURIFICACION GARCIA



Reebok 

VANS

Architecture  
& Retail

## Services for other fashion retailers

**Reebok Nueva Condómina** 140m<sup>2</sup> Murcia (Es)

**Reebok Parque Sur** 168m<sup>2</sup> Murcia (Es)

Architecture support services.  
Retail & Space planning  
Construction management support.



## Ermenegildo Zegna

### Ermenegildo Zegna Liberdade Avenue, Lisbon 2013

Collaboration of the CVMJ partners (as The Glub architects studio) with Firenze Progetti.

**Architecture:** Feasibility studies & Technical due diligence. Building survey. Layout studies. Lead consultancy & Statutory approvals. Construction drawings. Production information. Licensing and certification procedures.

**Project and Construction Management:** Engineering coordination. Implementation of corporate design guidelines. Programme management. Tenders for suppliers. Technical assistance on site. Technical reporting.



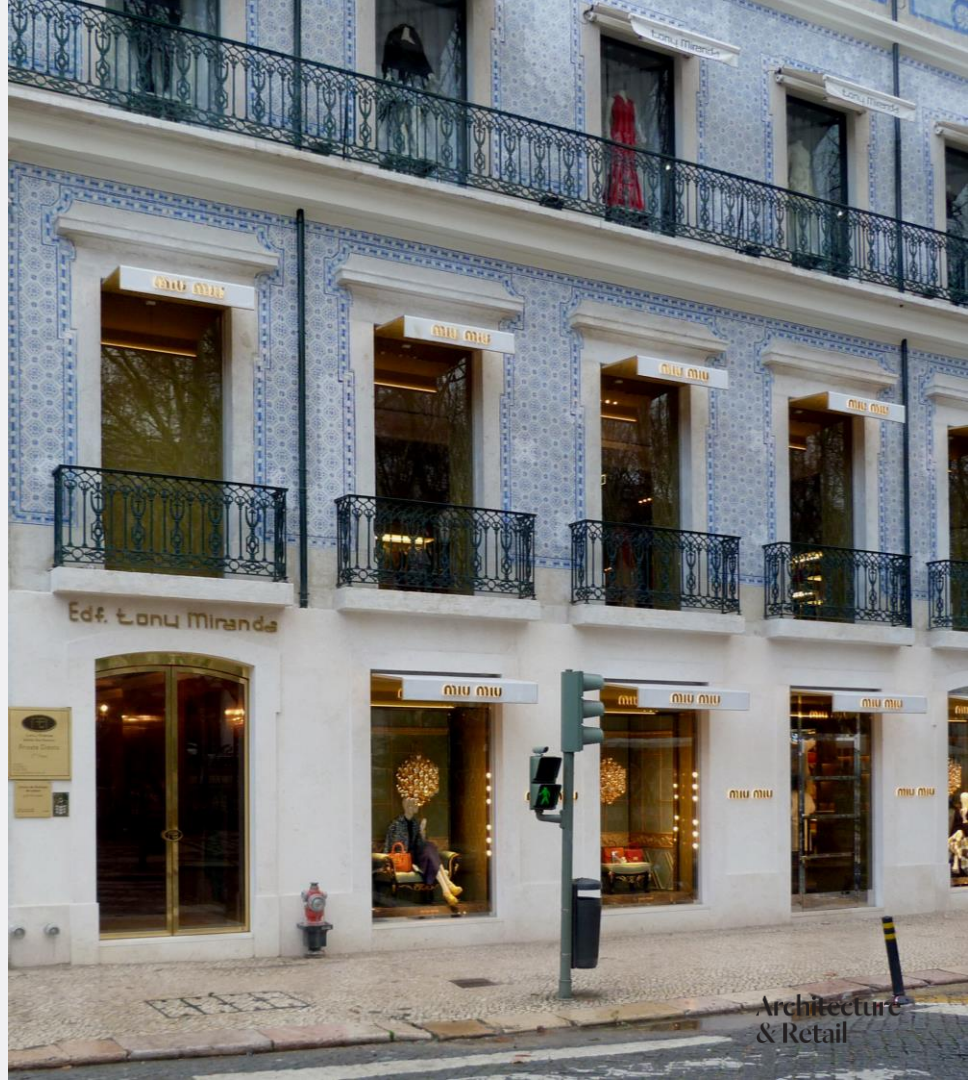
## Miu Miu

### Miu Miu Liberdade Avenue Lisbon 2012

Collaboration of the CVMJ partners (as The Glub architects studio) with Firenze Progetti.

**Architecture:** Feasibility studies & Technical due diligence. Building survey. Layout studies. Lead consultancy & Statutory approvals. Construction drawings. Production information. Licensing and certification procedures.

**Project and Construction Management:** Engineering coordination. Implementation of corporate design guidelines. Programme management. Tenders for suppliers. Technical assistance on site. Technical reporting.



## Prada

### Prada Liberdade Avenue Lisbon

Collaboration of the CVMJ partners (as The Glub architects studio) with Firenze Progetti.

Facility management services.



About us

## María José Cuesta - Partner Architect

### Bio

International experience in design, rehabilitation, project and construction management. She has been responsible for the development of projects in different areas: retail design, hospitality, residential, culture and leisure facilities.

She provide customers with the high quality levels in all their projects, through the best practices of teamwork and strategic partnerships.

In 2015 she founded the CVMJ Architects studio with Carlos Durán as an evolution of the The Glub studio. She collaborated with Firenze Progetti on retail projects from 2007 to 2017. Since 2000 she has been working in partnership with Studio Team on projects to recover cultural and natural heritage, particularly in tourist and cultural facilities. Her main interest is in the way architecture, public space and landscape interact with cultural, social and environmental transformations.



*"The creation of a project culture based on places of meeting between public and private, space and matter, artifice and nature"*



About us

## Carlos Durán Alba - Managing Partner

### Bio

Experienced consultant in strategies and design of retail, hospitality, residential, culture and leisure facilities. He has been the responsible for the development of different kind of projects coordinating multiskilled teams.

Skilled with great analytical capacity, he helps detect the needs of his clients, providing creative and feasible solutions.

In 2015 he founded the CVMJ Architects studio with María José Cuesta as an evolution of the The Glub studio. From 2007 to 2017 he collaborated with Firenze Progetti on retail projects. Since 2000 he has been working in partnership with Studio Team on projects to recover cultural and natural heritage, particularly in tourist and cultural facilities. With a background in design and architecture, his focus is on project culture



*“Architecture defined as a transition place, embodied by happenings, not as shape expressed by itself.*

*Function defined as the sense of Architecture in the culture of its time”*



About us

## About CVMJ

Founded by Carlos Durán and María José Cuesta in 2015, CVMJ is an architecture studio based in Lisbon that brings together the experience of the The Glub – architects studio, in operation since 2000.

At CVMJ we continue to value the knowledge and expertise of a wide professional network in order to offer integrated architecture and design, execution and management solutions.

Between 2007 and 2017, we supported Firenze Progetti in the development and management of commercial space projects.

Since 2000, we have been working in partnership with Studio TeAM on projects to recover cultural and natural heritage, particularly in tourist and cultural facilities.

Photographs: Manuele Ceconello, Valeria Galizzi, Debla Carbonell, Lucas Cuervo, Paulo Segadães, Beatriz Olmos, Carlos Durán, M<sup>a</sup> José Cuesta.

**CVMJ**



Architecture  
& Retail

**CVMJ** Architecture  
& Retail